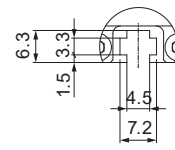
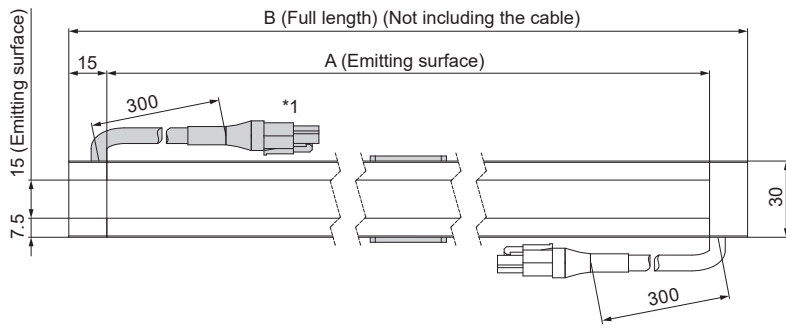
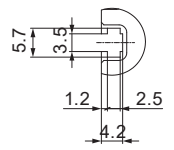


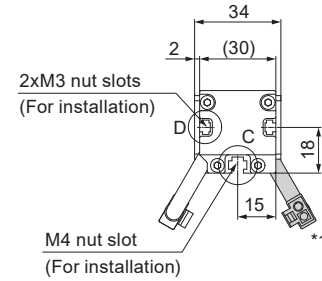
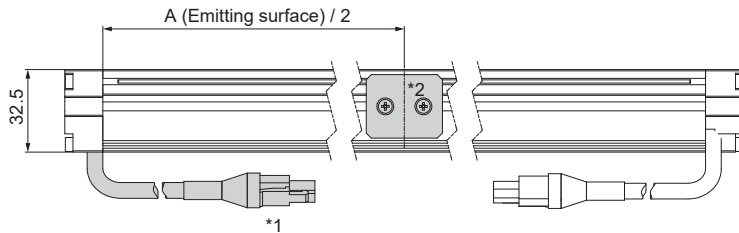
Dimensions (mm)



Detailed figure C



Detailed figure D



*1 Only the Light Units with an emitting surface length more than 1,200 mm have two connectors.

*2 Only the Light Units with an emitting surface length more than 1,600 mm have reinforcing metal fittings.

Model name		A (Emitting surface)	B (Full length)	Model name		A (Emitting surface)	B (Full length)
High luminance type / Add "-HU" at the end of the model name.)	LNSD-100SW/RD/BL	100	130	High luminance type / Add "-HU" at the end of the model name.)	LNSD-1600SW/RD/BL	1,600	1,630
	LNSD-200SW/RD/BL	200	230		LNSD-1700SW/RD/BL	1,700	1,730
	LNSD-300SW/RD/BL	300	330		LNSD-1800SW/RD/BL	1,800	1,830
	LNSD-400SW/RD/BL	400	430		LNSD-1900SW/RD/BL	1,900	1,930
	LNSD-500SW/RD/BL	500	530		LNSD-2000SW/RD/BL	2,000	2,030
	LNSD-600SW/RD/BL	600	630		LNSD-2100SW/RD/BL	2,100	2,130
	LNSD-700SW/RD/BL	700	730		LNSD-2200SW/RD/BL	2,200	2,230
	LNSD-800SW/RD/BL	800	830		LNSD-2300SW/RD/BL	2,300	2,330
	LNSD-900SW/RD/BL	900	930		LNSD-2400SW/RD/BL	2,400	2,430
	LNSD-1000SW/RD/BL	1,000	1,030		LNSD-2500SW/RD/BL	2,500	2,530
High uniformity type	LNSD-1100SW/RD/BL	1,100	1,130	High uniformity type	LNSD-2600SW/RD/BL	2,600	2,630
	LNSD-1200SW/RD/BL	1,200	1,230		LNSD-2700SW/RD/BL	2,700	2,730
	LNSD-1300SW/RD/BL	1,300	1,330		LNSD-2800SW/RD/BL	2,800	2,830
	LNSD-1400SW/RD/BL	1,400	1,430		LNSD-2900SW/RD/BL	2,900	2,930
	LNSD-1500SW/RD/BL	1,500	1,530		LNSD-3000SW/RD/BL	3,000	3,030